



THE EUROPEAN LAW STUDENTS' ASSOCIATION
IE LAW SCHOOL, MADRID, SPAIN.

[REGISTER BY CLICKING HERE.](#)



SPRING INTERNATIONAL COMPETITION

The Mitchell L. McLean Trial Competition

Participant Brochure and Guide

IN COLLABORATION WITH
ELSA SPAIN

IN COLLABORATION WITH
ELSA FRANCE

elsa

The European Law Students' Association
IE UNIVERSITY

About the Competition

The Mitchell L. McLean Trial Competition is an initiative by ELSA at IE Law School, focused on United States Law. The competition is held completely in English. No prior knowledge of US procedure is required.

This year, the focus will be on both US criminal law on bioterrorism, as well as appellate issues on election fraud and the ability for a president to hold office if accused of sedition.

The competition will be held internationally, between Spain and France. There will be three distinct rounds; a written, a trial (mock trial), and an appellate (a moot oral round).

There will be 8 teams per participating country. Teams are comprised of 6-8 participants, who will pay a fee of 39.00 EUR each (paid as a team) to participate. The teams who make it to the final rounds will be reimbursed (see fees page).

Visit www.elsaie.org/mlmtc to learn more.



What if I don't know much about American law?

We don't expect you to have a background in US law. This is designed for you to learn as you go.

We have developed a curriculum of optional workshops, sessions, and materials to help you learn, prepare, and develop your US legal acumen.

Through participation, you will have the chance to develop a keen understanding of US legal procedures and practices. This is an invaluable addition to your legal education, broadening your perspective and enhancing your career prospects in an increasingly globalized legal landscape.

Why should you participate?

Participating in this competition offers a multitude of invaluable benefits and opportunities that extend far beyond the courtroom experience.

This competition simulates an actual courtroom environment, providing a practical, hands-on experience in the field of law. It's an exceptional opportunity to apply what you've learned in the classroom to real-life scenarios, enhancing your understanding and skills in legal procedures, advocacy, and argumentation. Plus, by participating, you'll connect with law students, ELSA members, and legal professionals from various regions and backgrounds. This is a chance to build a professional network that could open doors for future internships, job opportunities, and collaborations.

Success in the competition can lead to recognition within the legal community, enhancing your resume and providing a talking point in interviews. Additionally, the chance of having registration fees reimbursed or receiving financial travel support is a significant incentive.

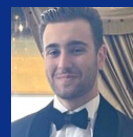
Organization and Management



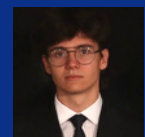
Dane Chilton
FOUNDER



Luca Diaz
DIRECTOR



Jason Helou
DIRECTOR



Jorge Sanjuan
COORDINATOR

Phases of the Competition

Our competition is designed to simulate all aspects of U.S. legal procedure.

Written Stage

The written stage is entirely local. Half of all teams will proceed to the next round. The prosecution will write an indictment brief, and the defense will write a defense brief.

The written stage involves the preparation of an indictment and defense statement (depending on assignment) which will be presented and scored by a panel of legal experts. The experts will then determine which teams will advance to their respective national rounds at their national capitol city.

Trial Stage

The Trial Stage will be known as the national round. In France, the national round will be held in Paris. In Spain, the national round will be held in Madrid.

The trial stage simulates a real courtroom battle. Teams will bring witnesses to the stand, present evidence, and argue in front of a jury. The verdict will determine which teams advance to the final championship weekend in Madrid. Teams will learn to object, as well as the fundamentals of American courtroom procedure through various workshops and seminars.

Appellate Stage

The Appellate round, or “moot” round will simulate the U.S. Supreme Court, and will be held at the Perez-Llorca Offices in Madrid.

The final round consists of a weekend-long event. Two teams from France and two teams from Madrid will compete to place in the final round. The winning team, decided by a panel of professors and attorneys, will be given the crystal trophy and the honor of first place. Additional awards include best oralist, best brief, best witness, and more.

Event Timeline

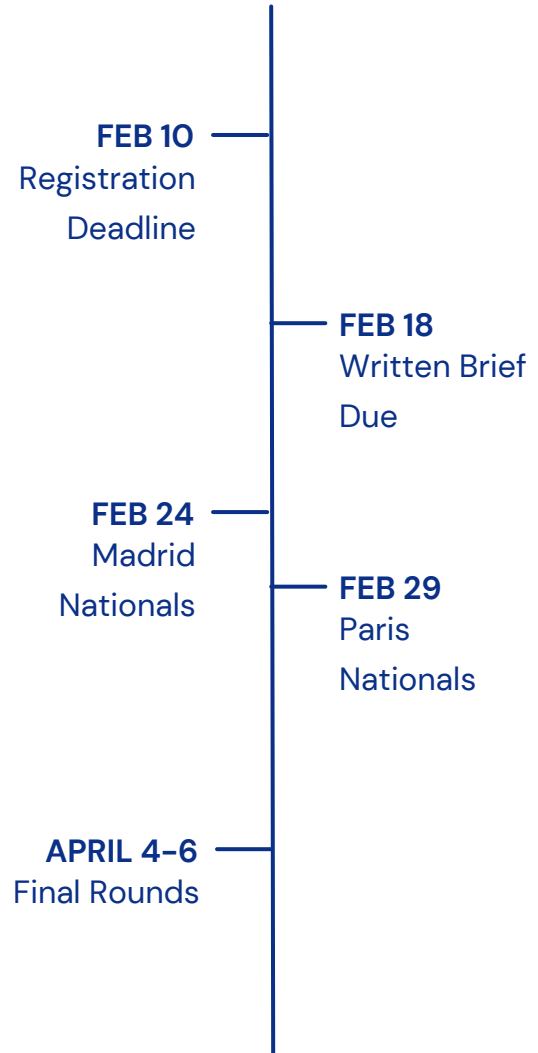
This timeline is created to ensure a relatively fast competition speed. Teams are encouraged to plan and ensure that they have prepared plans if they make it to their national and/or international round.

Upon registration, teams must commit via signature and payment to attend the rounds that they successfully make it to.

Not all team members must be present per round; the required number of team members present in a given round is half of the team's composition.

For the final round, all teams which participate in the competition at any stage are invited to attend. You should RSVP your attendance to the contact address given to you upon registration.

The receptions and events held in Madrid will be completely free of charge, but it should be noted that all travel and accommodation are the responsibility of the individuals and teams.



Team Formation

Each team participating in the competition must consist of at least six and no more than eight members. These individuals should be students or recent graduates, but they are not required to be an ELSA member or from the same college or university.

It is strongly recommended that team members have a good understanding of the English language, as it will be beneficial for participation.

Teams can represent various entities, including:

- A specific university (e.g., "Team IE Law School").
- A particular ELSA Chapter (e.g., "Team ELSA Pais Vasco").
- A specific geographical area (e.g., "Team Paris").
- Or a mixed group of students from different backgrounds (e.g., "Team Blue").

Note that a single university or ELSA chapter is limited to having no more than two teams representing it. Each team is required to appoint a team leader, known as the "Lead Counsel," and a deputy leader, referred to as "Co-Counsel." All other team members will hold the title of "Associate Counsel." The Lead Counsel is responsible for completing the registration form, collecting, and submitting the membership fees, and will serve as the primary contact throughout the competition.

While we encourage diversity in terms of sex, age, gender, academic degree, race, and other aspects within teams, there are no specific requirements in this regard.

Finances and Fees

To ensure a smoothly run competition, we are implementing a registration fee for each participant. Teams that reach the final championship round in Madrid will have their fee fully refunded.

While teams from outside Madrid may receive extra financial support to help with travel distances, it's primarily the team's responsibility to arrange funding for transportation and accommodation. We suggest seeking funding assistance from your home university or local ELSA chapter.

The registration cost is 39.00 EUR per person, and payments should be made collectively by the team. For instance, a six-member team would make a single payment of 234.00 EUR. This collective approach helps us cover expenses for awards, receptions, and seminars.

Payments should not be made individually. Instead, the team leader should gather the fees and transfer the total amount to the following account:

Account Holder: Director of Competitions, Jacob Dane Chilton

BIC: TRWIBEB1XXX

IBAN: BE76 9672 1746 7595

Address: Rue du Trône 100, 3rd floor, Brussels, 1050, Belgium

When making the transfer, please ensure the team leader's full name is included in the memo line. Payment must be made at the time of registration. Please note that fees are non-refundable, except in the specific scenario of reaching the final round.



Commitment

Participating in the Mitchell L. McLean Trial Competition might initially seem challenging, but rest assured, it offers a fantastic experience and a great chance to understand US trial procedures while visiting different places.

Your team isn't bound by any specific requirements beyond the set deadlines. How you manage and distribute your efforts on the case is entirely up to you.

However, once your team joins the competition, you're expected to stay involved throughout its duration. If your team reaches the final, attendance at the last round in Madrid is mandatory, and the dates are unlikely to change.

Please note that withdrawing from the competition is not an option, and no refunds will be provided. Withdrawals or teams quitting have a significant negative impact on the competition's logistics and credibility. It's important to mention that not every team member needs to be present at every round. Allocating certain rounds to specific members is a viable strategy.



You must register before **February 10.**

Team leaders should **fill out this form** to register their team. Space is very limited!

DON'T HAVE A TEAM?

FILL OUT THIS FORM AND WE'LL TRY TO MATCH YOU.

Please direct immediate questions to
PRESIDENT.IEUNIVERSITY@ES.ELSA.ORG

A full guide along with case materials will be distributed on January 31. You can take a look at past case materials, and a recording of last year's final round, by visiting www.elsaie.org/mlmtc.

[CLICK HERE TO REGSITER FOR THE COMPETITION.](#)

